



β -tubulin Mouse Monoclonal Antibody

Cat. Number: UM4003
For Research Only

Description:

Synonyms:	β -tubulin
Immunogen:	Full-length human β -tubulin protein
Specificity:	Human, Rat, Mouse
Host Species:	mouse
Ig Isotype:	Mouse IgG1
Purification:	Protein A or G purified
Applications:	WB (1: 1000-1: 10000) , IHC(1:200), IF(1:200)
Band size:	55KD

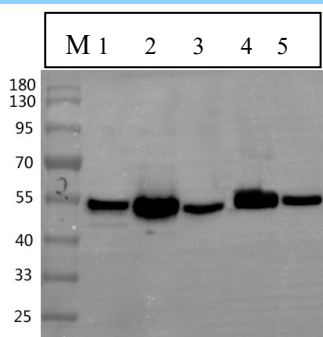
Formulation and Storage:

Formulation:	Liquid
Storage:	-20°C or lower

Background:

Microtubules are constituent parts of the mitotic apparatus, cilia, flagella, and elements of the cytoskeleton. They consist principally of 2 soluble proteins, alpha- and β -tubulin, each of about 55 kDa. Antibodies against β -tubulin are useful as loading controls for Western Blotting. However it should be noted that levels of β -Tubulin may not be stable in certain cells. For example, expression of β -Tubulin in adipose tissue is very low and therefore β -Tubulin should not be used as loading control for these tissues.

Image



Lane1: Rat intestine tissue protein lysate
Lane2: Rat brain tissue protein lysate
Lane3: Rat kidney tissue protein lysate
Lane4: Mouse 3T3 cell lysate
Lane5: Human-hk-2cell lysate
 β -tubulin antibody (UM4003) at 1:5000 dilutions