



Flag tag Mouse Monoclonal Antibody

Cat. Number: UM3009
For Research Only

Description:

Synonyms:	Flag tag
Immunogen:	A synthetic peptide DYKDDDDK coupled to KLH
Specificity:	All specials
Host Species:	mouse
Ig Isotype:	Mouse IgG1
Purification:	Protein A or G purified
Applications:	WB (1: 1000-1: 10000) , IP(1:200), IF(1:200)
Band size:	NA

Formulation and Storage:

Formulation:	Liquid
Storage:	-20°C or lower

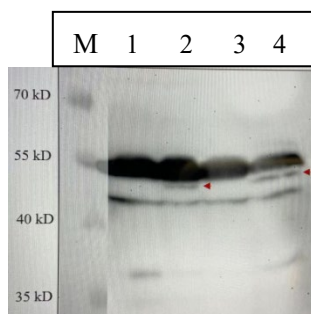
Background:

The DYKDDDDK peptide is a small component of an epitope which does not appear to interfere with the bioactivity or the biodistribution of the recombinant protein. It has been used extensively as a general epitope tag in expression vectors. As a member of Tag antibodies, Flag-tag antibody is the best quality antibody against DYKDDDDK in the research. Flag-tag antibody can recognize C-terminus, internal, and N-terminus Flag-tagged proteins.

Attention:

We found a strong nonspecific band in Arabidopsis thaliana with PTA 7002 vector at 55KD.

Image:



Lane1: Arabidopsis thaliana tissue with an empty PTA vector.
Lane2: Arabidopsis thaliana tissue with flag PTA vector.
Lane3: Arabidopsis thaliana tissue with an empty PTA vector.
Lane4: Arabidopsis thaliana tissue with flag PTA vector.
Flag antibody(UM3009) at 1:1000 dilution.